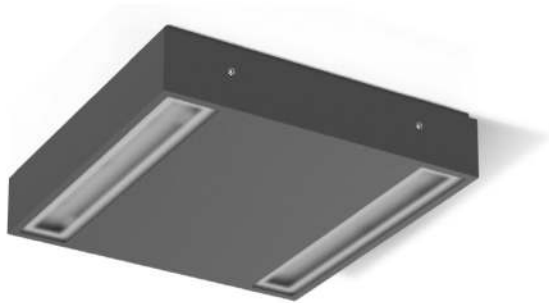


MIMIK 20 CEILING

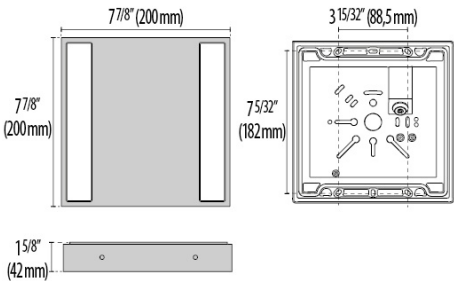


- Ceiling- and wall- mount series. Fixtures consist of:
- Multi-step powder-coat painting process, optimized against UV rays and corrosion.
 - Copper-free precision die-cast aluminum housing and mounting plate.
 - Micro-prismatic patterned, flat, tempered silk-screened soda-lime glass diffuser (FLAT versions).
 - Custom molded, anti-aging gasket(s).
 - Stainless steel external hardware.
 - Custom MCPCB utilized to maximize heat dissipation and promote a long LED life.
 - DarkSky approved in 3000K or below.
- 100° x 100° beam angle (S/EW).
 - Input voltage: 120-277 V (50 / 60 Hz), integral 0-10 V dimming driver.
 - Consult factory for dimming options, custom finishes (please specify RAL color), and non-cataloged CCT (Kelvin) options including static colors.
 - Product meets Buy American Act requirements within ARRA.
 - 5-year warranty.
 - Marine Grade finish.
 - Suitable for Natatorium applications.



FINISHES

- AN-96 / Iron gray / Textured
- GR-94 / Aluminum metallic / Textured
- WH-87 / White / Textured
- BK-81 / Black / Textured
- RB-10 / Iron rust / Textured



MIMIK
20 CEILING

Scan here
for installation
instructions



Lumen Output	27K	3K	35K	4K	5K
Mimik 20 Ceiling	1844	1869	1893	1918	1942

24W Max Wattage

Order Guide - Mimik 20 Ceiling



Order code example

M20C-24-AM-3K-120-NA

M20C

Wattage	Finish	Kelvin	Voltage	Controls	Accessories
24W 24 watt (max) XX Specify Wattage Must be below max	AM Aluminum Metallic IG Iron Gray IR Iron Rust BK Textured Black WH Textured White CC Custom Color	27K 2700k 3K 3000k 35K 3500k 4K 4000k 5K 5000k 65K 6500k RED Static Red GRN Static Green BLU Static Blue AMB Static Amber	UNV 120-277V	NA Non Dimming 0-10V 0-10V Dimming Driver ELV 120V Line- Voltage Dimming Driver	REM Remote Mounted Emergency Battery Back-Up CON2 (single-gang j-box, adaptor plate and 1/2" knockouts) CON4 (single-gang j-box, adaptor plate and 3/4" knockouts) BABAA Build America Buy America Act compliant

80 CRI STANDARD - OTHER OPTIONS AVAILABLE